



Max. Gross Machine Weight

81,800 kg

Net Machine Weight

36,800 kg

Payload

45,000 kg

Engine

QSX15

Rated Power

388 kW (520 hp / 528 ps)
@ 2,100 rpm

Struck Capacity

21.8 m³

Heaped Capacity (SAE 2:1)

29.8 m³

DR50C MINING TRUCK

TOUGH WORLD. TOUGH EQUIPMENT.

DR50C SPECIFICATIONS >>>

ENGINE

Emission Regulation	Tier 3 / Stage III	
Manufacturer	Cummins	
Model	QSX15	
Rated Power	388 kW (520 hp / 528 ps) @ 2,100 rpm	
Peak Torque	2,365 N·m @ 1,400 rpm	
Displacement	15 L (4.0 gal)	
Number of Cylinders	6	

TRANSMISSION

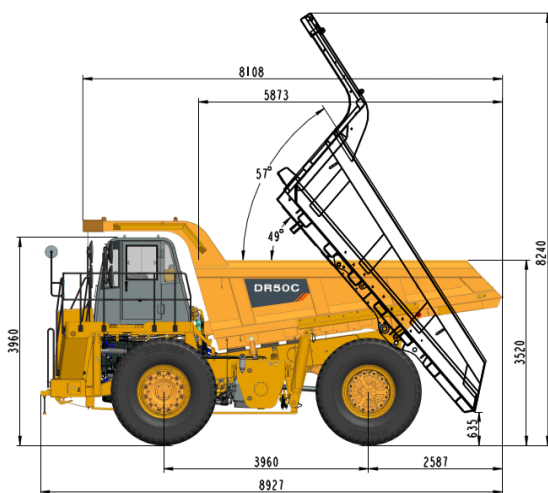
Model	Allison 4800	
Gear	Driving Ratio	Max. Travel Speed
F1	7.63	5.2 km/h
F2	3.51	11.3 km/h
F3	1.91	20.8 km/h
F4	1.43	27.8 km/h
F5	1.00	39.8 km/h
F6	0.74	53.7 km/h
F7	0.64	55.0 km/h
R1	4.80	7.5 km/h
R2	17.12	2.2 km/h

REAR AXLE

Differential Ratio	3.414
Planetary Ratio	5.8
Total Reduction Ratio	19.8

HOIST SYSTEM

Raise Time	15 sec
Lower Time	12 sec



PERFORMANCE

Max. Steering Angle	38°
Max. Swing Angle	±6.5°
Front Suspension Stroke	305 mm
Rear Suspension Stroke	207 mm

DUMP BODY

Bottom Plate Thickness	16 mm
Front & Side Plate Thickness	10/10 mm
Struck Capacity (SAE)	21.8 m ³
Heaped Capacity (2:1) (SAE)	29.8 m ³

TIRES

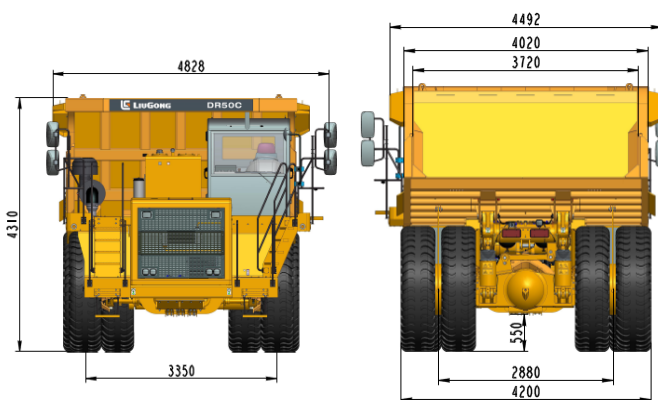
Rim Size	15.00/3.0-35
Tire Size	21.00-35/36PR(E4)

SERVICE CAPACITY

Fuel Tank	550 L	145.3 gal
Crankcase	60 L	15.9 gal
Transmission	68 L	18.0 gal
Cooling System	170 L	45 gal
Hydraulic System	350 L	91.9 gal
Wheel Gear Reduction (Total)	45 L	11.9 gal
Differential	50 L	13.2 gal
Front Suspension (Each)	15 L	4.0 gal
Rear Suspension (Each)	17 L	4.5 gal

WEIGHT DISTRIBUTION

Rated Load	Front Axle	Rear Axle
Empty Load	52%	48%
Full Load	34%	66%



Guangxi Liugong Machinery Co., Ltd.

No. 1 Liutai Road, Liuzhou, Guangxi 545007, PR China
T: +86 772 3886124 E: overseas@liugong.com
www.liugong.com

Specifications and designs are subject to change without notice. Machines shown may include optional equipment. Liugong standard and optional equipment may vary from region to region. Please consult your Liugong dealer for information specific to your area. Engine power kW is converted to horsepower (1 kW=1.3596 ps and 1 kW=1.3410 hp) in this file.

10/2024 Designed by Liugong
Replace the previous versions of 08/2020