



Max. Gross Machine Weight	74,000 kg
Net Machine Weight	33,000 kg
Payload	41,000 kg
Engine	QSM15
Rated Power	563 kW (755 hp / 765 ps) @ 2,400 rpm
Struck Capacity	20.2 m ³
Heaped Capacity (SAE 2:1)	25.6 m ³

DA45C MINING TRUCK

DA45C SPECIFICATIONS >>>

ENGINE	
Emission Regulation	Tier 3 / Stage III
Model	Cummins QSM15
Rated Power	563 kW (755 hp / 765 ps) @ 2,400 rpm
Peak Torque	2,365 N·m @ 1,400 rpm
Number of Cylinders.	6
Piston Displacement	14.5 L
Air Cleaner	Dry type oil bath air filter

TRANSMISSION	
Model	ZF 8EP470A
Torque Converter	With locking system
Transmission	Multi-plate clutch
Speed Range	8 gears forward and 4 gears reverse
Maximum Travel Speed	60 km/h

AXLE	
Final Drive Type	Planetary Drive
Axle Ratio	21.202
Axle Load	28

SUSPENSION SYST	
Front	Rubber suspension system
Rear	rubber suspension system

STEERING SYSTEM	
Type	Articulated steering Two double acting steering cylinders
Supplementary Steering	Electrically powered
Minimum Turning Radius, Wall to Wall	8947 mm
Articulation Angle	±45°

BRAKES	
Service Brakes	Multi-disk brake
Parking Brake	Spring applied, calliper disc type
Retarder	Hydraulic retarder

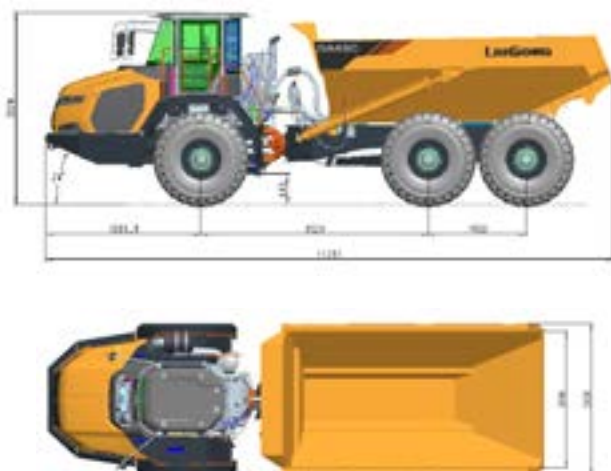
MAIN FRAME	
Type	Articulated type box-sectioned construction on front and rear

BODY	
Struck	20.2 m³
Heaped (2:1, SAE)	25.6 m³
Payload	41 t
Material	NM450
Bottom	14 mm
Front	8 mm
Sides	12 mm
Heating	Exhaust heating

HYDRAULIC SYSTEM	
Hoist Cylinder	Two single-stage double acting oil cylinders
Relief Pressure	26 Mpa
Hoist Time	12 s

WEIGHT DISTRIBUTION	
Fuel Tank	528 L
Engine Oil	46L
Torque Converter, Transmission And Retarder Cooling	75 L
Total Differentials	180 L
Hydraulic System	225 L

TIRES	
Tire Size	29.5 R25
Rim	25 - 25.00 / 3.5



Guangxi Liugong Machinery Co., Ltd.

No. 1 Liutai Road, Liuzhou, Guangxi 545007, PR China
T: +86 772 3886124 E: overseas@liugong.com

www.liugong.com

Specifications and designs are subject to change without notice. Machines shown may include optional equipment. Liugong standard and optional equipment may vary from region to region. Please consult your Liugong dealer for information specific to your area. Engine power kW is converted to horsepower (1 kW=1.3596 ps and 1 kW=1.3410 hp) in this file.

10/2024 Designed by Liugong