



<b>Engine</b>	Cummins L9
<b>Rated Power</b>	210 kW (282 hp / 286 ps) @ 2,100 rpm
<b>Operating Weight</b>	23,800 kg (52,470 lbs)
<b>Standard Bucket Size</b>	4.2 m <sup>3</sup> (5.5 yd <sup>3</sup> )
<b>Standard Breakout Force</b>	188 kN (42,264 lbf)
<b>Standard Dump Clearance</b>	3,275 mm (10' 9")

# 870T WHEEL LOADER

TOUGH WORLD. TOUGH EQUIPMENT.



# 870T SPECIFICATIONS >>>

## ENGINE

Emission Regulation	Stage V
Manufacturer	Cummins
Model	L9
Rated Power	210 kW (282 hp / 286 ps) @ 2,100 rpm
Peak Torque	1,525 N·m (1,125 lbf·ft) @ 1,100 rpm
Displacement	8.9 L (2.4 gal)
Number of Cylinders	6
Aspiration	Turbocharged & Air-to-air intercooled

## TRANSMISSION

Transmission Type	Countershaft, powershift
Torque Converter	Single stage, three elements
Maximum Travel Speed, fwd	38 km/h (23.6 mph)
Maximum Travel Speed, rev	25.4 km/h (15.8 mph)
Number of Speed, fwd	4
Number of Speed, Rev	3

## AXLES

Differential Front Type	Limited slip differential
Differential Rear Type	Limited slip differential
Axle Oscillation	±10°

## STEERING

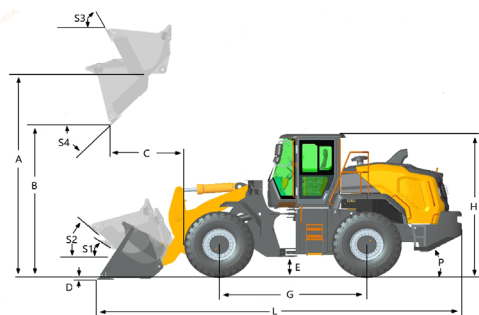
Steering Hydraulic System	Flow amplifying
Steering Relief Pressure	25 MPa (3,625 psi)

## BRAKES

Service Brake Type	Wet discs brake
Service Brake Actuation	Full hydraulic
Parking Brake Type	Drum
Parking Brake Actuation	Electro-hydraulic release

## HYDRAULIC SYSTEM

Main Pump Type	Piston
Main Relief Pressure	Bucket tilt joint: 28 MPa (4,061 psi) Boom joint: 30 MPa (4,351 psi)
Raise	5.8 s
Dump Time	1.3 s
Float Down Time	3.5 s
Hydraulic Cycle Time	10.6 s



## LOADER ARM PERFORMANCE WITH STANDARD BUCKET 4.2 m³ (5.5 yd³)

Tipping Load - Straight (ISO 14397-1:2007)	17,500 kg (38,581 lbs)
Tipping Load - Full Turn (ISO 14397-1:2007)	15,500 kg (34,172 lbs)
Bucket Breakout Force	188 kN (42,264 lbf)
A Maximum Hinge Pin Height	4,541 mm (14'11")
B Dump Clearance at Full Height Discharge	3,275 mm (10'9")
C Dump Reach at Full Height Discharge	1,200 mm (3'11")
D Maximum Digging Depth, Bucket Level	95 mm (3")
S <sub>1</sub> Rollback at Ground Level	44°
S <sub>2</sub> Bucket Rollback at Carry	46.2°
S <sub>3</sub> Bucket Rollback at Maximum Height	60.5°
S <sub>4</sub> Maximum Dump Angle at Full Height	45°

## BUCKET PERFORMANCE

Reference Bucket	3.0~7.0 m³ (3.9~9.2 yd³)
------------------	--------------------------

## DIMENSIONS

E Ground Clearance	450 mm (1'6")
G Wheelbase	3,550 mm (11'8")
H Cab Height	3,460 mm (11'4")
J Wheel Tread	2,280 mm (7'6")
K Width over Tires	2,980 mm (9'9")
L Length with Bucket Down	9,100 mm (29'10")
M Turn Angle, Either Side	38°
P Rear Angle of Departure	29°
R <sub>1</sub> Turning Radius, Bucket Carry	7,350 mm (24'1")
R <sub>2</sub> Turning Radius, Outside of Tire	6,796 mm (22'4")
W Width over Bucket	3,210 mm (10'6")

## TIRES

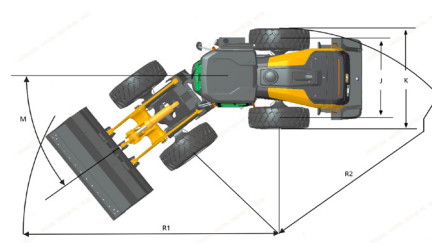
Tire Size	26.5R25 ★ L-3
-----------	---------------

## OPERATING WEIGHTS

Operating Weight	23,800 kg (52,470 lbs)
------------------	------------------------

## SERVICE CAPACITY

Fuel Tank	330 L (87.2 gal)
Engine Oil	22 L (5.8 gal)
Aftertreatment DEF	45 L (11.9 gal)
Cooling System	35 L (9.2 gal)
Hydraulic System	270 L (71.3 gal)
Transmission and Torque Converter	35 L (9.2 gal)
Axles, Front/Rear	52 / 50 L (13.7 / 13.2 gal)



Guangxi Liugong Machinery Co., Ltd.

No. 1 Liutai Road, Liuzhou, Guangxi 545007, PR China  
T: +86 772 3886124 E: overseas@liugong.com  
www.liugong.com

Specifications and designs are subject to change without notice. Machines shown may include optional equipment. Liugong standard and optional equipment may vary from region to region. Please consult your Liugong dealer for information specific to your area. Engine power kW is converted to horsepower (1 kW=1.3596 ps and 1 kW=1.3410 hp) in this file.

04/2025 Designed by LiuGong  
Replace the previous versions of 03/2025